

 **CP PLUS**

 **ezyKam+**

**Solar Powered
4MP 4G PT Camera**

CP-Z44R



CP PLUS ezyKam+



Standard Security Camera

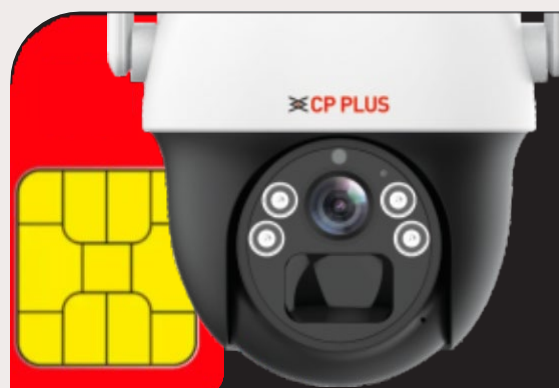


4MP Quad HD Camera

Designed to represent an enhanced picture quality in full HD video so that every detail can be viewed with vivid clarity and a pixilated video feed can be avoided.

4G Support

To eliminate the hassle of cables and switches, this camera has been 4G enabled which makes it easier and better to conduct surveillance of any closed space.





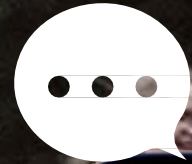
Motion Tracking

Whenever unexpected motion is detected in the video frame, the camera has been devised to rotate automatically to track the movement of people and record it to investigate later.

Human Body Detection

Designed to provide human detection and intelligent alerts, which means only being alerted only when the need occurs as the camera detects people as opposed to animals, passing vehicles, or other inanimate moving objects.



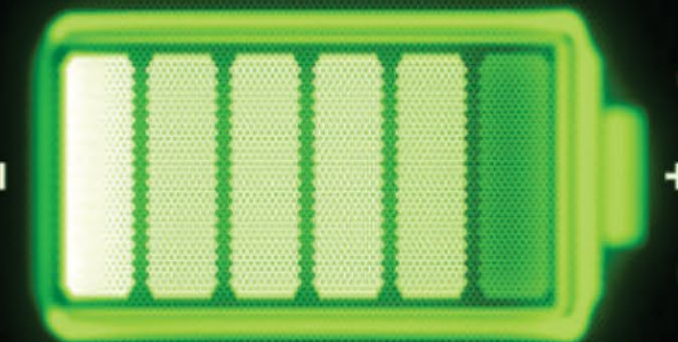


View & Talk

Enables you to stay in touch with your loved ones from anywhere, meaning you can also talk while viewing the live video feed on the phone.

In-built Battery

No need for wires anymore. Designed with an in-built battery of 4500mAh*4 (18000mAh) power to deliver independent and sustained surveillance. The in-built battery support helps keep the camera operational for days even without a power outlet.



CP PLUS ezyKam+

Solar Powered

Comes with a solar panel to produce 7W of power per hour to keep the battery charged throughout the day and night so that you can enjoy an enhanced picture quality with a vivid clear video feed. Enjoy uninterrupted surveillance powered by solar energy.

Full Color Video

See every detail, even after dark. Designed to capture vibrant colors for clear identification, this camera provides much better video clarity, where every color can be viewed in detail while also enjoying a high-resolution video stream. Identify intruders with ease thanks to crystal-clear night vision.



Specification - Z44R

Feature	Description
Image Sensor	1/2.8” 4MP CMOS Image Sensor (0.9071 centimeters)
Resolution	4MP(2560 x 1440)
Video Compression	H.265/ H.264
Video Streaming	Main stream: 2560 x 1440, Sub-stream : 800 x 448
FPS	15fps
Lens	4mm
Angle of View	Horizontal:77.32° , Vertical:42.61°
Max. Aperture	F2.0
S/N Ratio	38dB
Noise Reduction	3D DNR
WDR	DWDR
Minimum Illumination	Color: 0.1Lux, Black and white 0.01Lux
Electronic Shutter	1/50s(1/60s)-1/100000s
Picture Adjustment	Auto-adjust Contrast, Brightness, Saturation
Exposure Conditions	Auto-adjust AWB, AGC, BLC
IR Distance	IR Range of 30Mtr.
IR Cut Filter	Dual IR-CUT Filter auto switch
IR Number	4pcs IR LEDs
White LED Distance	Warm Light Range of 20 Mtr.
White LED Number	4pcs Spotlight LEDs
PIR Detection	Up to 10 Mtr
Motion detection	Support
Motion Tracking	Support
Pan/Tilt Angle	Pan:266° , Tilt:90°

Feature	Description
Alarm Notification Push	Support
Two-way talk	Support
Human Body Detection	Support
Built-in Siren	Support
Audio Compression	AAC, G711A
Audio Input	Built-in Mic
Echo Cancellation	Support
Audio Output	Built in speaker
4G Frequency Band	FDD-LTE:B1/B3/B5/B8, TDD-LTE:B34/B38/B39/B40/B41
4G Standard	LTE-TDD / LTE FDD
Micro SD	Micro SD Card, Max. 256 GB
Smart Phone	Android, iOS
Application Environment	Outdoor
Weatherproof Standard	IP66
Operating Temperature	-20° C ~50° C
Solar Panel	7W
Battery	Built in 4 x 21700 type battery (Total 18000mAH)
Battery Backup	Upto 48h*
Operating Humidity	<95%(no condensation)
Power Source	Type-C, DC 5V-2A
Power Consumption	≤8W
Casing	Plastic
Weight	1.718kg (without battery)
Dimension	132mm x 191mm x 170mm

*Battery backup depends on the motion in environment and camera working mode (Power saving mode). Other factors like Spotlight/IR/PIR detection will affect the battery backup.

Applications



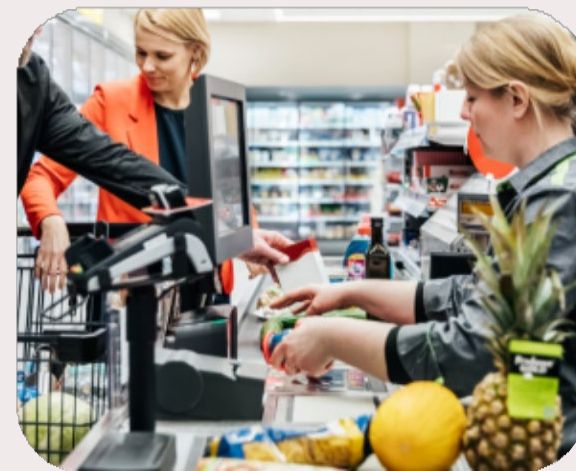
Kids Safety



Office



Home



Retail Shops



Pet Safety