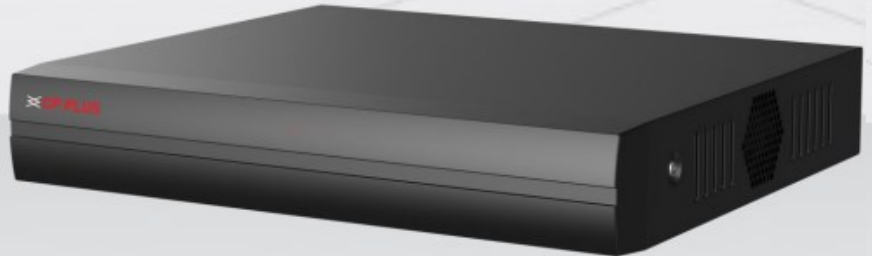


# CP-LAR-0801K1

## 8Ch. 5M-N HD Digital Video Recorder

- Up to 8 Ch. Video, 1 Ch. Audio
- Support 8 Channel IP camera input
- Auto Adaptive TVI/CVI/AHD/CVBS and IP Signal Input
- Max Incoming 80Mbps Bandwidth
- H.265/H.265+/H.264/H.264+ Video Compression
- 1 SATA port up to 10TB, 2 USB Ports
- HDMI / VGA video output



### System Overview

CP Plus has introduced the new and impactful range of DVRs under the Lite Series which has been integrated with the 4K and H.265 encoding technology that provides you with an outstanding at a reasonably pocket-friendly price. The 4K resolution processors present in this product help in bringing out every little detail in the image. Along with that, this DVR uses the intuitive shortcut operation menu which lets you control and manage the system remotely as well and can work as edge storage, central storage, backup storage .

This product has been crafted to pay attention to what matters the most through applying deep learning artificial intelligence, which makes it faster the event response time and helps in making the video more actionable.



# CP-LAR-0801K1

## 8Ch. 5M-N HD Digital Video Recorder

### Functions

#### Signal auto-adapt

This DVR recognizes the signal type (CVI, TVI, AHD, CVBI) and automatically adapts without requiring any manual intervention. This has provided much ease to the user since signal compatibility was always a towering concern.

#### Addnl. IP cameras support

In some installations, customers have specific features and functions that are available in IP cameras only, such as two-way communication, edge storage, alarm I/O, etc. CP PLUS DVRs provide additional IP camera support to provide flexibility so that the desired solution features can be made accessible.

### About CP PLUS

The brand that is on its way to lead the world when it comes to the security and surveillance industry, CP PLUS, keeps bombarding the market with the most reliable range of products that have been designed carefully and methodically to automate the whole surveillance and security process, no matter how big your premises are.

It was the initiative to help the public in the area where they are the most vulnerable and to empower the sense of safety in our hearts that had conceptualized CP PLUS. And embarking on its mission to make the world a safer and more secure place has taken the brand's journey to unprecedented levels even when compared to international competitors.



# CP-LAR-0801K1

## 8Ch. 5M-N HD Digital Video Recorder

| Feature           | Specification  |
|-------------------|--|
| Processor         | Embedded processor   |
| Operating System  | Embedded LINUX   |
| IP Camera Input   | 8 Channels   |
| User Interface    | RS485  |
| Video Input       | 8 Channel BNC  |
| Video Output      | 1 HDMI: 3840x2160 1920x1080 1280x1024 1280x720 1024x768;<br>1 VGA: 1920 × 1080P, 1280 × 1024 , 1280 × 720,1024 × 768   |
| Video Streaming   | Normal Mode: Analog: PAL: 5MP(2560×1952)@6fps, 5MP(1280×1952)@10fps, 4MP(2560×1440)@8fps, 4MP(1280×1440)@15fps, 3MP(2048×1536)@9fps, 3MP(1024×1536)@18fps, 1080P(1920x1080)@15fps, 720P(1280×720)@25fps, 960H(960x480)@25fps<br>NTSC: 5MP(2560×1952)@6fps, 5MP(1280×1952)@10fps, 4MP(2560×1440)@8fps, 4MP(1280×1440)@15fps, 3MP(2048×1536)@9fps, 3MP(1024×1536)@18fps, 1080P(1920x1080)@15fps, 720P(1280×720)@30fps, 960H(960x480)@30fps<br>Lite Mode: PAL: 5MP(1280×1952)@10fps, 4MP(1280×1440)@15fps, 3MP(1024×1536)@18fps, 1080N(960x1080)@25fps, 720P(1280×720)@25fps, 960H(960x480)@25fps<br>NTSC: 5MP(1280×1952)@10fps, 4MP(1280×1440)@15fps, 3MP(1024×1536)@18fps, 1080N(960x1080)@25fps, 720P(1280×720)@25fps, 960H(960x480)@30fps<br>Pure IP(H.265): PAL : 8MP@9x25fps, 5MP@12x25fps,4MP@16x25fps, 3MP@16x25fps, 1080P@16x25fps, 960P@16x25fps, 720P@16x25fps, D1@16x25fps<br>NTSC:8MP@9x30fp, 5MP@12x30fps,4MP@16x30fps, 3MP@16x30fps, 1080P@16x30fps, 960P@16x30fps, 720P@16x30fps, D1@16x30fps |
| Encoding Capacity | 1 SATA Hard Disk , Up to 10TB, 1 SATA Interface  |
| Network Bandwidth | Normal Mode: Default: 8 Channel (TVI/ AHD: 5MP, AHD/ TVI/ CVI: 4MP, AHD/ TVI/ CVI: 1080P/ 720P, Analog: 960H)+ 4 Channel network (Max 8MP)<br>Analog + Network: 6 Channel Analog(5MP)+ 8 Channel network (Max 8MP), 4 Channel Analog(5MP)+10 Channel network (Max 8MP), 2 Channel Analog(5MP)+ 12 Channel network (Max 8MP)<br>Lite Mode: Default: 8 Channel (TVI/ AHD: 5M@12fps, AHD/ TVI/ CVI: 4M@15fps, AHD/ TVI/ CVI: 1080P/ 720P, Analog: 960H)+ 4 Channel network (Max 8MP)<br>Analog + Network: 6 Channel Analog(5M@12fps)+ 8 Channel network (Max 8MP), 4 Channel Analog(5M@12fps)+ 10 Channel network (Max 8MP), 2 Channel Analog(5M@12fps)+12*network(Max 8MP)<br>Network: 16 Channel 8MP/ 5MP/ 4MP/ 3MP/ 2MP/ 960P/ 720P<br>(Total incoming bandwidth ≤80M)   |

| Feature             | Specification  |
|---------------------|--|
| Search Mode         | ALL, Channel, Manual, Time, Date, Motion Detection, Alarm, Tag   |
| Playbackfunction    | Play, Pause, Stop, Fast play, Slow play, Rewind, Single frame forward/ back, Digital Zoom, Full screen   |
| Playback            | <p>Normal Mode: Pure Analog: 8CH 5M@6fps, 8CH 4M@8fps, 8CH 3M@9fps, 8CH 1080P@15fps<br/> Mix Mode: 4CH 5M@6fps, 4CH 4M@8fps, 4CH 3M@9fps, 4CH 1080P@15fps, 1CH 8MP 30fps, 2CH 5MP 30fps, 2CH 4MP @30fps, 2CH 3MP@30fps<br/> Pure IPC: 1CH 4K@30fps, 2CH 5MP@30fps, 3CH 4MP@30fps, 4CH 3M@30fps, 4CH 1080P@30fps, 4CH 960P@30fps, 4CH 720P@30fps<br/> Lite Mode: Pure Analog:8CH 5M_Lite@ 8CH 1080N@25fps,8CH 720P@25fps,8CH 960H@25fps<br/> Mix Mode: 4CH 5M@6fps, 4CH 4M@8fps, 4CH 3M@9fps, 4CH 1080P@15fps, 1CH 8MP 30fps, 2CH 5MP 30fps, 2CH 4MP @30fps, 2CH 3MP@30fps<br/> Pure IPC: 1CH 4K@30fps, 2CH 5MP@30fps, 3CH 4MP@30fps, 4CH 3M@30fps, 4CH 1080P@30fps, 4CH 960P@30fps, 4CH 720P@30fps</p> |
| Ethernet            | 1 RJ45 10M/100M Self-adaptive Ethernet Interface   |
| Protocols           | TCP/IP, HTTP, HTTPS, SMTP, DHCP, FTP, DDNS, RTP, RTSP, NTP, UPnP, P2P, DDNS, Pelco-D, Pelco-P  |
| Remote Operations   | 4 Channel / 1Channel   |
| AI by Recorder      | Human Detection  |
| Decoding Capability | 4 x 1080P@30fps  |
| Record Mode         | Normal\ Motion Detection\ Alarm\ Intelligent   |
| OSD                 | Camera title, Time, Video loss, Alarm, Motion detection, Recording   |
| Privacy Masking     | 3 Rectangular Zones (Each camera)  |
| Audio Input         | 1 Channel, RCA, Support AOC  |
| Audio Output        | 1 Channel, RCA   |
| Motion Detection    | 8 Channel (Max. 16 Channel in pure network mode)   |
| Video Compression   | H.265+, H265, H264+, H.264   |
| Alarm Input         | 4 Channel  |
| Alarm Output        | 1 Channel  |
| Trigger Events      | Recording, Email, Screen tips, Buzzer, Push notifications (Motion detection)   |
| Resolution          | 5MP(2560×1952),5MP_HALF(1280×1952),4MP(2560×1440),4MP_HALF(1280×1440),3MP (2048×1536),1080P(1920×1080),720P(1280×720),960H(960×480)  |
| Extra Stream        | CIF/D1(1-30fps)  |
| Video Display Split | 1/4/8/9  |

| Feature               | Specification                                  |
|-----------------------|--|
| UTC                   | Support  |
| Backup Mode           | USB Device (with format FAT 32 )/ Network/ FTP |
| Smart Phone           | iPhone, Android                                |
| Browser               | Edge, IE8-11, Google Chrome, Firefox, Safari   |
| Audio Compression     | G.711U/ G.711A                                 |
| USB Interface         | 2 USB 2.0 Interfaces                           |
| Power Consumption     | DC 12V/1.5A ≤ 7W (without HDD)                 |
| Operating Temperature | -10°C~55°C                                     |
| Operating Humidity    | 10~90%   |
| Dimensions            | 260 mm x 230 mm x 43 mm                        |
| Weight                | 0.88Kg (Without HDD)                           |

**Company Name:**

CP PLUS (Aditya Infotech Ltd.)

F-28 Okhla Industrial Area, Phase 1,

New Delhi 110020, INDIA

**Contact Mail ID :-** [customercare@cpplusworld.com](mailto:customercare@cpplusworld.com)